

★ *The Holiday Issue* ★

NEW TRADITIONS

Carolina winter towns, reinvigorating holiday decor, a grandiose feast, and a practice of giving that never gets old make for a happy holidays indeed.

The Flaid Penguin and Crown Cuckoo King Crab Cioppino
p. 108



Feast of Seven Fishes

Squid ink fettuccine, grilled lobster chowder, pine-smoked oysters: The most magnificent of Italian holiday traditions undergoes a modern reinvention, and we're left wondering why we ever settled for ham and fixins'.

East Fork Pottery / Holiday Gift Guide / Dalla Mano / Jamie Lynch On Top Chef / The Nutcracker / Global Jerald Melberg / Ashley B. Boyd / KBN's Holiday Decor / Hunt Slonem / Bechtler Young Visionaries / Hex

The FOLIO ★ VIGNETTES



STYLE & FUNCTION

Lucy and Company's Sophisticated and Usable Foyer

★ STORY BY MARGO JACOBS | PHOTOS BY MEKENZIE LOLI ★

Rich colors of cream, warm bronze, pale gray, and soft textures dominate this intimate multi-functional area designed by Beth Keim, founder of Lucy and Company. Keim's designs range from sophisticated elegance to playful whimsy. "The goal in this space was to keep things light and fresh," Keim says, and she seems to have succeeded admirably.

Acting as a foyer, dining area, and occasional work space, this room is the pinnacle of chic sophistication. The elegant white banquette and floating wooden table anchor the space, but it's the brass accents that add that other level of refinement to the design.

"Adding the right amount of mixed metals to a space adds that touch of sophistication, but the key word for me is 'edit,'" the designer says. "When designing a room, I typically bring more accessories than I need; it's all about the editing when installing a space. I wait until I have everything collected, then I deliver it all at once. Styling is my favorite part of the process and knowing when to edit or stop editing is key."

Lighting is also central to Keim's design. This room is punctured by a gilt, star-burst chandelier, and a floor lamp is also incorporated into the space. Keim found the

116 • QCEXCLUSIVE.COM • HOLIDAY 2016

The FOLIO ★ VIGNETTES



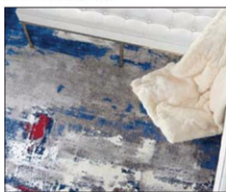
“ADDING THE RIGHT AMOUNT OF MIXED METALS TO A SPACE ADDS THAT TOUCH OF SOPHISTICATION.”

chandelier for a client a few years ago, but had been waiting for the right space in which to use it. The inclusion of the floor lamp acts as both form and function. "The lower directional light [from the floor lamp] helps with the occasional office work done in here, but it also adds the lower lighting that you need to accompany a chandelier. Aesthetically, however, I also wanted to add a little deliberate height to the left side of the room."

"Multi-purpose rooms, especially in small spaces, are so important in my thought process," Keim says. "This space was square and located right when you opened in the front door. I always thought it should be a 'usable foyer'. The space greets anyone who enters there with style, but it's also immediately functional."

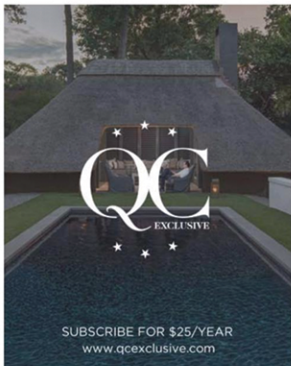
★ FOR A BIT MORE INFO:
www.lucyandcompany.com

RUGculture



HAND-KNOTTED AND CUSTOM RUGS

RUGculture • 316 East Boulevard
(980) 207-3287 | www.rug-culture.com
Hours: Monday-Friday 10:30-5:30 Saturday 10:30-3:30
Evening and Sundays by appointment



SUBSCRIBE FOR \$25/YEAR
www.qcexclusive.com