

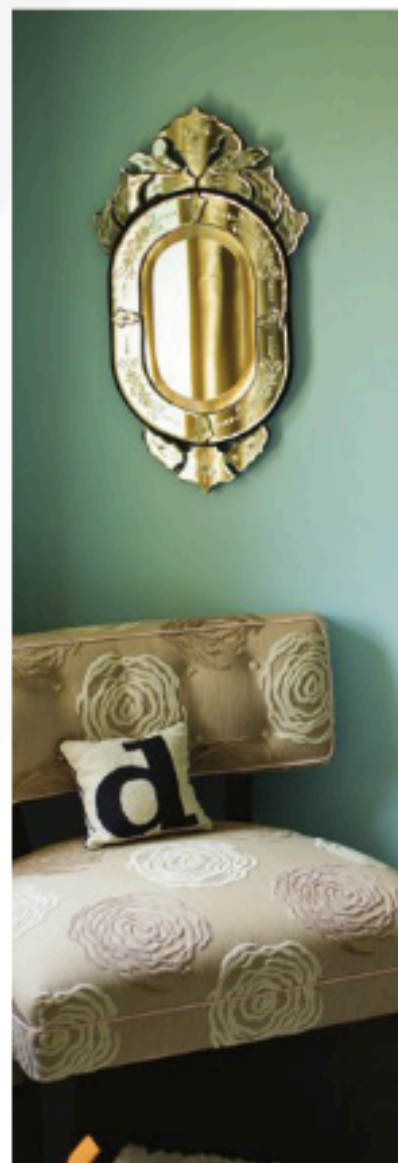
CHARLOTTE URBAN

# HOME

CELEBRATING INSPIRATIONAL DESIGN AND PERSONAL STYLE



**BEST OF  
GUIDE**



THE BEST OF DESIGN, STYLE AND INSPIRATION



BETH KEIM

The finished product is clean, functional and artistic, and a new room everyone wants to spend time in together just enjoying the "outdoors."

## "Roughing It"

**There is nothing I love** more than a clean slate, an empty room – a room that doesn't even exist, actually. When I work with a client in the beginning stages of a remodel or an addition, we don't have any obstacles to deal with. We can really think about the function of the room and, with the help of an amazing contractor and carpenter, we can have everything on our wish list.

I recently worked with the Freemans on a new project, transforming their garage into a new family room and pool house bath. Pulling in The Salin's Group for expertise, we sought out to create a functional, stylish space for a family of five. Style was very important. Something beautiful, chic and fun that echoed the feel of the wooded lot their secluded home occupied, yet more artistic and modern than the typical "cabin" look.

I chose bright birch tree wallpaper, with an almost hand-drawn feel, to cover the room. The clean and modern look of this paper set the tone of the room and became the focal point. It's very eye catching and bright, and with the large retractable

doors the trees seemed to drift into the wooded backyard in such a beautiful way.

The next step was to filter in large and simple pieces of furniture in warmer tones. Since I was working with such a sharp, clean and modern paper, I chose natural wood accent furniture to warm it up. These amazing pieces, while rustic in material, all have the modern clean lines I needed to compliment the overall look. I believe they're works of art on their own.

I then chose a large dark leather sectional couch. I love sectionals, especially tight back sectionals. The look is cleaner and over time, you aren't dealing with the back cushions losing shape. This piece is large enough to be the main furniture in the room and accommodates their growing family.

This room was screaming for a Lucite bubble chair. It's modern lines worked well with the overall feel, but more importantly it doesn't visually block the great wallpaper paper - plus, honestly – it was just fun!

Speaking of ways to avoid taking away from







THIS ROOM WAS SCREAMING FOR A LUCITE BUBBLE CHAIR. IT'S MODERN LINES WORKED WELL WITH THE OVERALL FEEL, BUT MORE IMPORTANTLY IT DOESN'T VISUALLY BLOCK THE GREAT WALLPAPER PAPER - PLUS, HONESTLY - IT WAS JUST FUN!



your key element, hidden built-in storage was a decision we all made early on. The entire wall opens up for ample storage, yet is designed and built in a way that doesn't call attention.

The finished product is clean, functional, and artistic, and a new room everyone wants to spend time in together just enjoying the "outdoors." ♦

Beth Keim is the owner of Lucy and Company, a full-service interior design firm located at 1009 East Boulevard. For more information visit [www.lucyandcompany.com](http://www.lucyandcompany.com) or call 704-342-6655.

Images courtesy of Mekenzie France

